



## PHG Update: December 10

Dear Valued Providers

We want to be a resource to our Premier Health Group Independent providers. As our health care system begins to stabilize, we will provide clinical and operational updates as they become available to continue and provide support to providers.

In addition, we have created a resources page on the [PHG website](#).

Please feel free to contact us directly at (937) 499-7441 if you have any questions

Yours sincerely,

Matthew S. Reeves, DO, MBA  
System VP, Value Based Services, Premier Health  
President, Premier Health Group

### IN THIS ISSUE

Primary Care Workflow for the Evaluation of Bamlanivimab: Location Change for Therapy Infusion

FAQs on Coronavirus Vaccination

## PCP Workflow for the Evaluation of Bamlanivimab: Location Change for Therapy Infusion

Bamlanivimab is a monoclonal antibody for the outpatient treatment of COVID-19. While the safety and effectiveness of this investigational therapy continues to be evaluated, Bamlanivimab has been shown in clinical trials to reduce COVID-19-related hospitalization or emergency room visits in patients at high risk for disease progression within 28 days after treatment. Earlier this month, Bamlanivimab was approved by the FDA for emergency use authorization for administration to outpatients with mild to moderate cases of COVID-19. **A referral from a healthcare provider is required.**

- You must confirm that this is the patient's first positive result for SARS-CoV-2 virus.
- Patient must also:
  - Be 18 years of age or older
  - have had onset of symptoms within past 7 days
  - This must be the patient's first positive result for SARS-CoV-2 virus
  - Weigh at least 40 kg
  - Not received prior dose of Bamlanivimab
  - Meet additional criteria related to age or comorbidities to receive the therapy (listed below if needed)

- Additional information continued on the next page -



- Three-part attestation must be completed. Document the following in the patient's medical record:
    - The fact sheet for patients was given to the patient or caregiver. [Click here to view the fact sheet.](#)
    - The patient was informed of alternatives to receiving authorized Bamlanivimab
    - Bamlanivimab is an unapproved drug that is authorized for use under this emergency use authorization.
  - Severe adverse reactions must be reported to the FDA within 7 days. Reporting details will be forthcoming.
  - **WHEN:** Go-live is **Wednesday, Dec. 2**
  - **WHERE:** This will be offered initially at three locations
    - Atrium Medical Center Infusion Center
    - Upper Valley Medical Center Infusion Center
    - Premier Health Urgent Care in Huber Heights (**switching to Urgent Care in Miamisburg as of 12/14/2020**)
  - **HOW:** Orders can be received by fax to **937-223-9837**. [Click here to complete the order.](#) **Please bookmark this page so you can easily access the order.**
- 

To be treated with Bamlanivimab, at least one of the following must be present:

- Greater than or equal to 65 years of age
- Body Mass Index (BMI) greater than or equal to 35
- Chronic Kidney Disease (Stage IV or greater)
- Diabetes with A1C  $\geq 8$  or random blood sugar  $> 300$  mg/dL
- Immunosuppressive Condition (solid organ transplant, ESRD or ESLD, advanced HIV, active chemotherapy, chronic high dose steroids ( $>30$ mg prednisone for  $>30$  days), use of biologic agents for treatment of underlying diseases (i.e. TNF alpha inhibitor for RA or Crohn's)

**OR**

Are greater than or equal to 55 years of age with one or more of the following:

- Cardiovascular disease other than hypertension
- Currently receiving treatment with medication for hypertension
- Chronic Obstructive Pulmonary Disease, Interstitial Lung Disease, Cystic Fibrosis, or Pulmonary Fibrosis

### **FREQUENTLY ASKED QUESTIONS: Coronavirus Vaccination**

#### **When will the first doses of COVID-19 vaccine be available?**

According to CDC guidance, it is anticipated that the vaccine may be available in limited quantities later this month, with supplies increasing in early 2021. However, this is a very fluid situation, and supply amounts are subject to change.

#### **Will receiving a flu vaccine protect against COVID-19?**

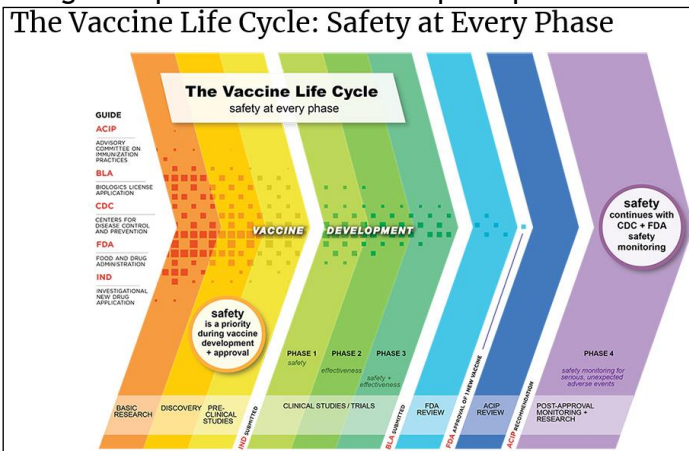
Getting a flu vaccine will not protect against COVID-19; however, flu vaccination has many other important benefits. Flu vaccines have been shown to reduce the risk of flu illness, hospitalization and death. Getting a flu vaccination is important to not only reduce the risks associated with flu but also to help conserve potentially scarce health care resources.

#### **Does the vaccine take into account a wide array of diverse backgrounds?**

The disparate impact of the coronavirus on diverse populations has been well documented. For this reason, several vaccine manufacturers have reported that they relied on simultaneous studies across the world to ensure a diverse group of study participants in determining effectiveness.

## Is the vaccine safe?

Safety is a top priority in the vaccine development. For more information, visit the CDC website [here](#). There are rigorous phases and scientific principles in developing a new vaccine. Here is a summary:



## Why do we need a COVID-19 vaccine?

Stopping a pandemic requires using all the tools available. Vaccines work with your immune system so your body will be ready to fight the virus if you are exposed. Other steps, like wearing masks and social distancing, help reduce your chance of being exposed to the virus or spreading it to others. Together, COVID-19 vaccination and following CDC's recommendations to protect yourself and others will offer the best protection from COVID-19.

## Can I get COVID-19 from the vaccines listed?

No. The two vaccines expected to be received by Ohio do not contain any live virus and cannot cause an infection with SARS-CoV-2. The vaccines by Pfizer and Moderna only contain a small amount of the virus' genetic material that helps trigger an immune response by the body to help protect itself.

## Is it safe for pregnant and breastfeeding women to get the vaccine?

Exclusions will likely be identified and may include women who are pregnant or breastfeeding. These exclusions will be part of the final communication prior to vaccine distribution.

## How often will I need to get the vaccine?

Many COVID-19 vaccines are administered as a two-dose series. After receiving the initial dose, a second vaccine administration is required 21 or 28 days later with the exact timing for the second dose depending on the vaccine manufacturer. At this time, we do not know if additional boosters or an annual vaccine will be necessary.

## If someone receives the vaccine, will they be exempt from wearing a mask?

The vaccine won't provide protections from COVID-19 for every person who is inoculated, and the vaccine also does not provide immediate immunity (but rather triggers a response in the body to build immunity). Therefore, for now we'll continue to follow guidelines to decrease the risk of spread, including masks, distancing, limiting employee density, limiting travel and improving ventilation, barriers and procedures that limit close and sustained contact.